



# DOLTONE HOUSE

EVENTS • VENUES • CATERING

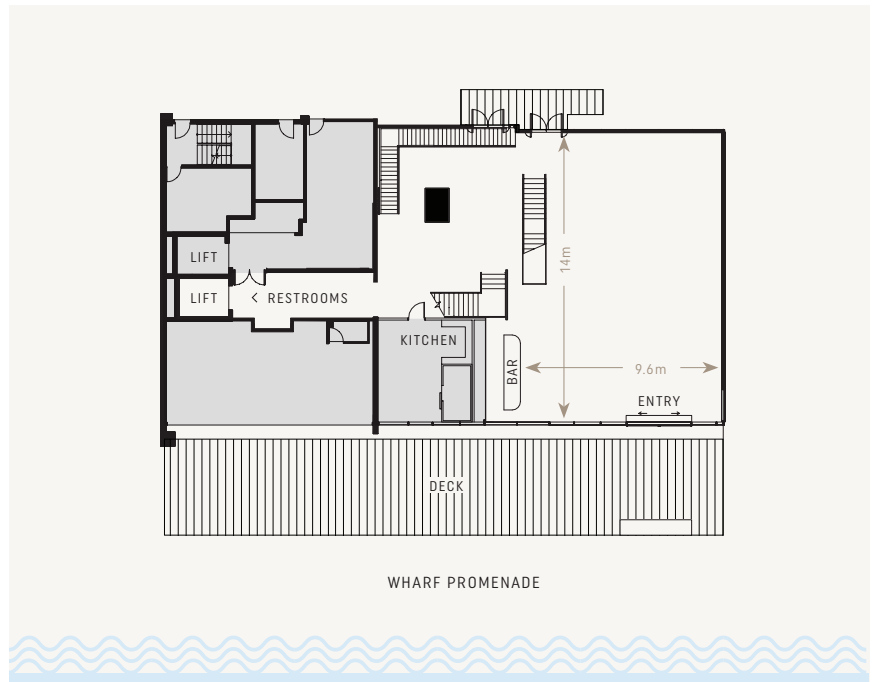
## TRIBUTE

### ECLECTIC MUSEUM ON SYDNEY HARBOUR

Tribute Museum showcases a collection of historical photographic memorabilia and pays homage to Jones Bay Finger Wharf built in 1919. The space features the original vertical wool bale chute, timber staircase and large cargo sliding door and boasts floor to ceiling windows which create a natural abundance of light. The hanging vintage wine decanter light and black mesh ceiling installation creates a stylish urban vibe. While the versatile bar with black and gold detailing enhances the industrial feel and the outdoor timber entertaining deck overlooks the spectacular Sydney Harbour bridge.

# Jones Bay Wharf TRIBUTE

- Waterfront location with Sydney Harbour Bridge views
- Indoor / outdoor space over two levels
- C-level management suite
- Exclusive designer space
- Private bar
- Outdoor entertaining area overlooking Sydney Harbour and city skyline
- Floor to ceiling windows
- Abundance of natural light
- Lectern/Microphone, surround speakers for background music
- Audio Visual (AV) available\*
- Suitable as breakout meeting space

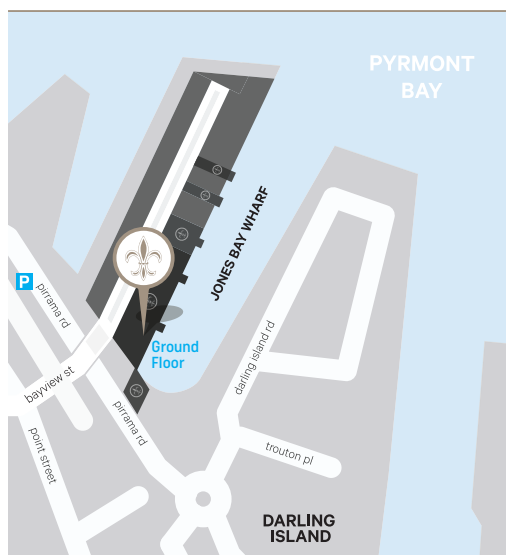


CAPACITIES	BANQUET	COCKTAIL	THEATRE	CABARET
	100	150	100	72

Not to scale, capacities subject to event set up requirements

## FOOD & CATERING - AWARD WINNING -

Serving Sydney's best quality produce, from the freshest of seafoods, and the premium cut of meats, we source only the highest standard for you.



## LOCATION

The setting offers an event experience on the best harbour in the world, an ideal venue location and a very unique address for your next event.

Only minutes from our Darling Island venue and the Darling Harbour precinct, Doltone House Jones Bay Wharf is within easy walking distance of the CBD and all the attractions that Sydney city has to offer.

The venue may be accessed by boat, water taxi, ferry, light rail, bus or private transport.

Jones Bay Wharf  
Ground Floor  
26-32 Pirrama Road,  
Pyrmont. 2009

## PARKING

Parking is available directly across the road from the venue in the Jones Bay Wharf Car Park or at The Star. You may enter the venue from the street level stairs or dedicated lift on Pirrama Road.